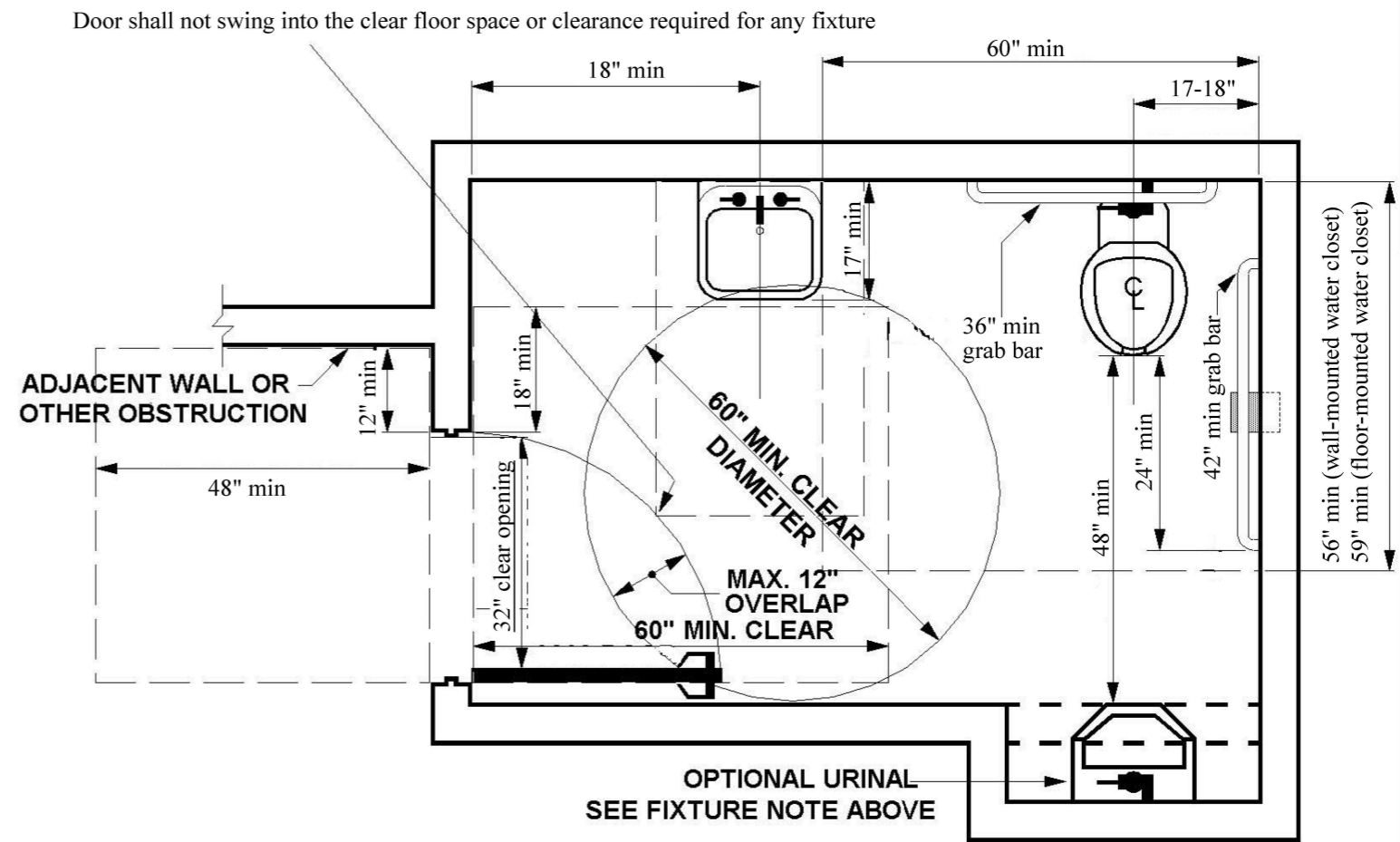
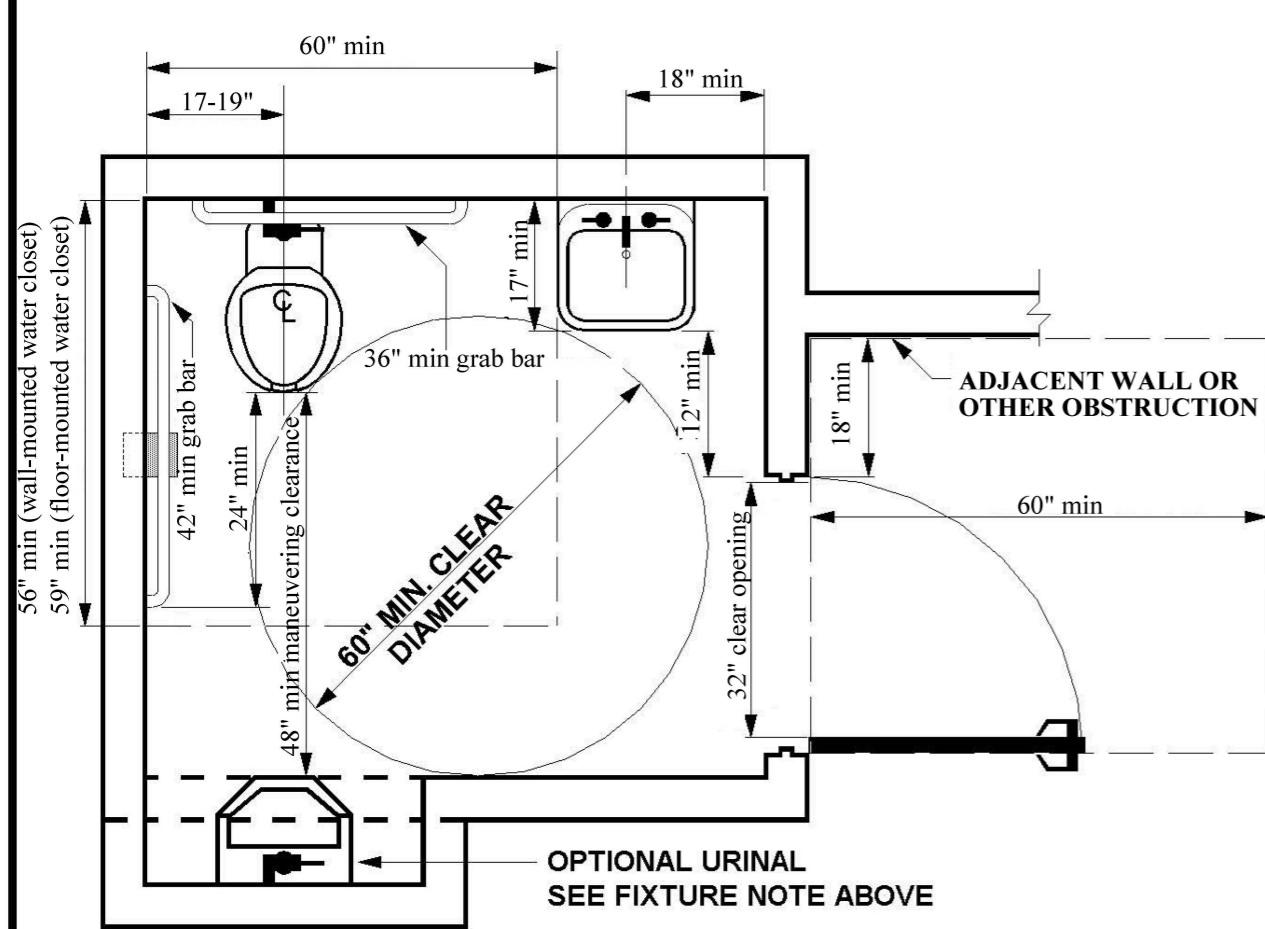




City of Redlands
Building & Safety
Disabled Access Standards

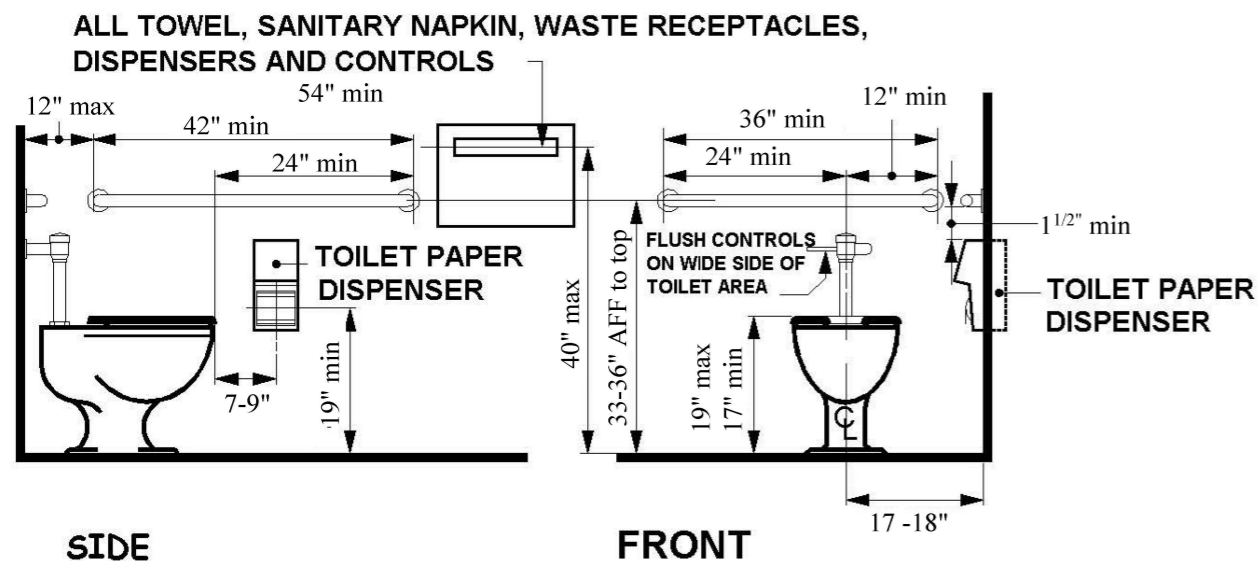


WHEN DOOR SWINGS AWAY FROM TOILET ROOM

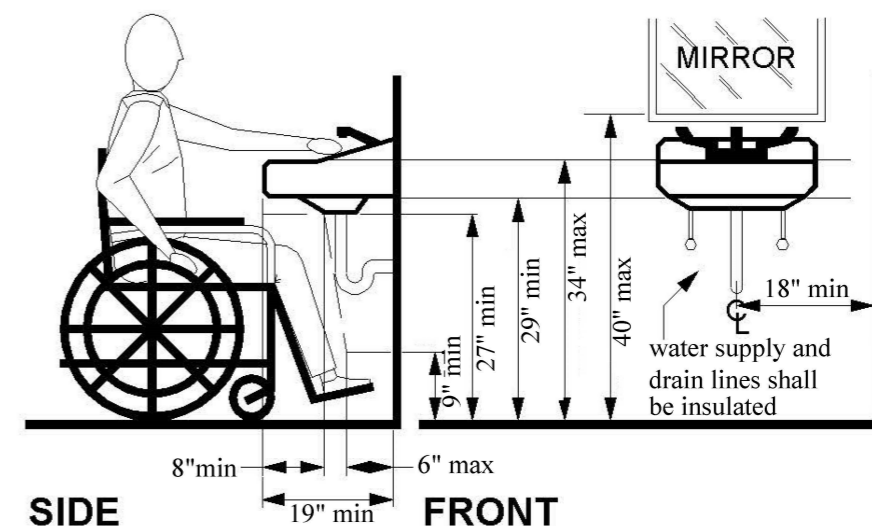
WHEN DOOR SWINGS INTO TOILET ROOM

TYPICAL SINGLE-ACCOMMODATION TOILET ROOM

FIXTURE LAYOUTS MAY VARY



ACCESSIBLE WATER CLOSET



ACCESSIBLE LAVATORY

Note: The use of this standard shall not be construed to be an approval of any violation of any of the provisions of the state or city laws

SCALE NONE

ADC 3/3/2017
 DRAWN DATE

REV. DATE APPR.

- 1
- 2
- 3

Accessible single use restroom

SHEET