

City of Redlands



Quality of Life Department Solid Waste Operations

Chris Boatman, Director



Division Overview

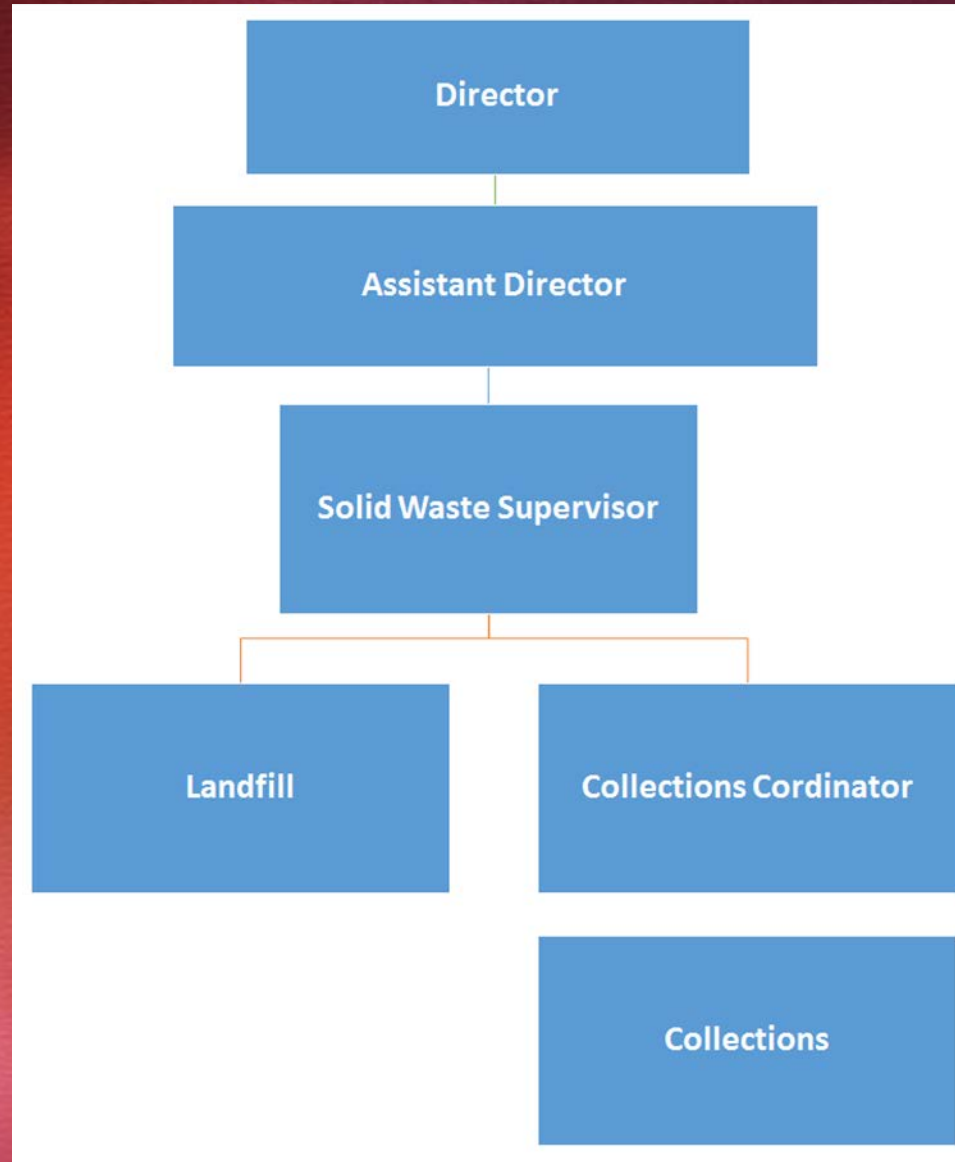


Personnel

Collections

Landfill

Personnel



Collection Services



Collection Regulations



California Street Landfill



Landfill Equipment



Regulatory Equipment



Landfill Growth



Looking Ahead

- Mandatory landfill cell expansion
- Infrastructure necessary for landfill longevity and compliance
- Environmental Mandates
- Solid Waste fleet replacement
- Establishment of reserve

Fee Information and Background

Last Solid Waste Operations Rate Adjustments

2010 - Rate increase designed to project revenues and expenses through FY 2016

1994 - Rate Decrease

1992 - Rate increase

Current Rates Projected to Incur Annual Deficits

Significant New Operational Requirements

State landfill diversion requirements

Organic waste diversion requirements

Operating and Capital Costs Have Increased

Questions?